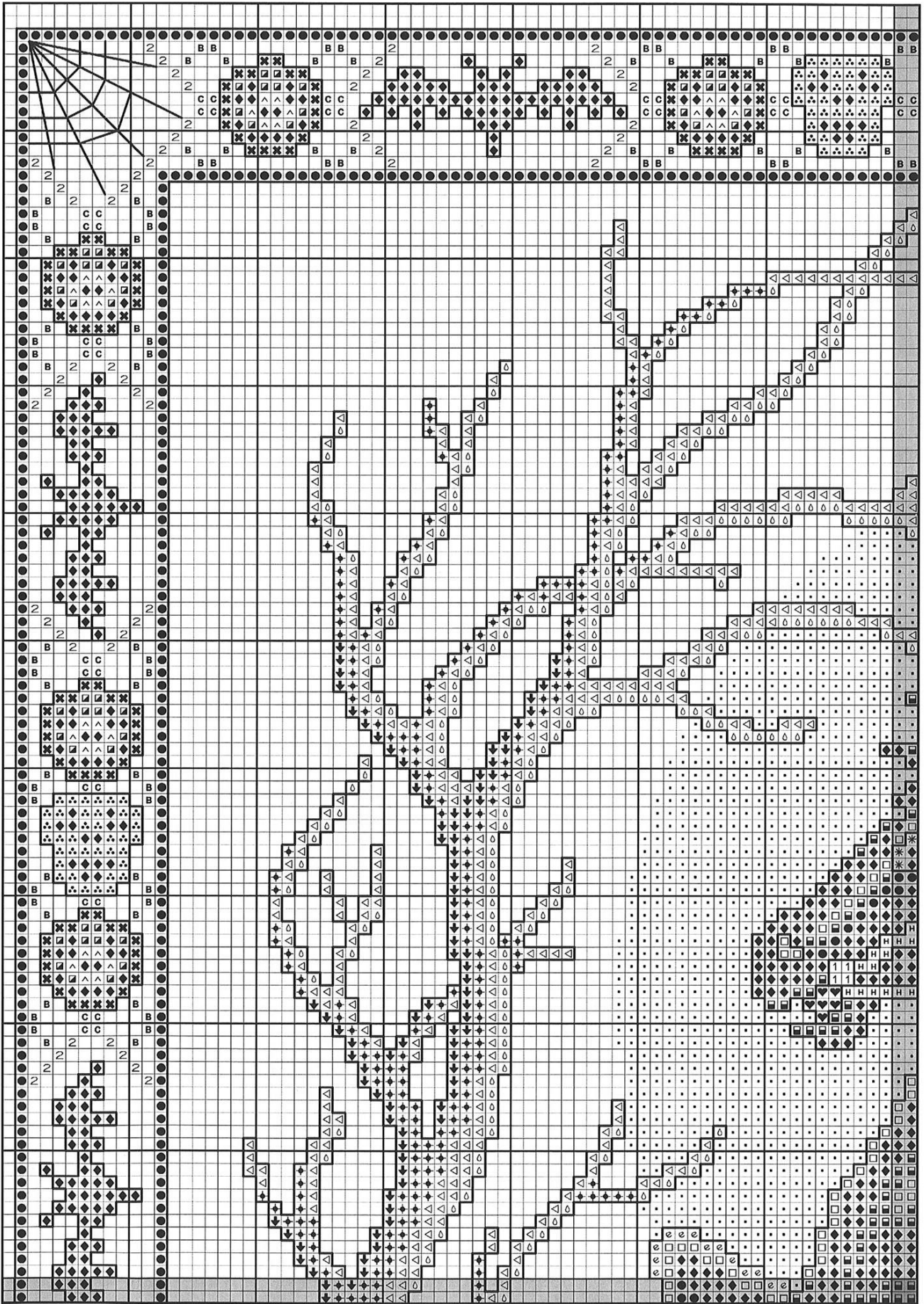
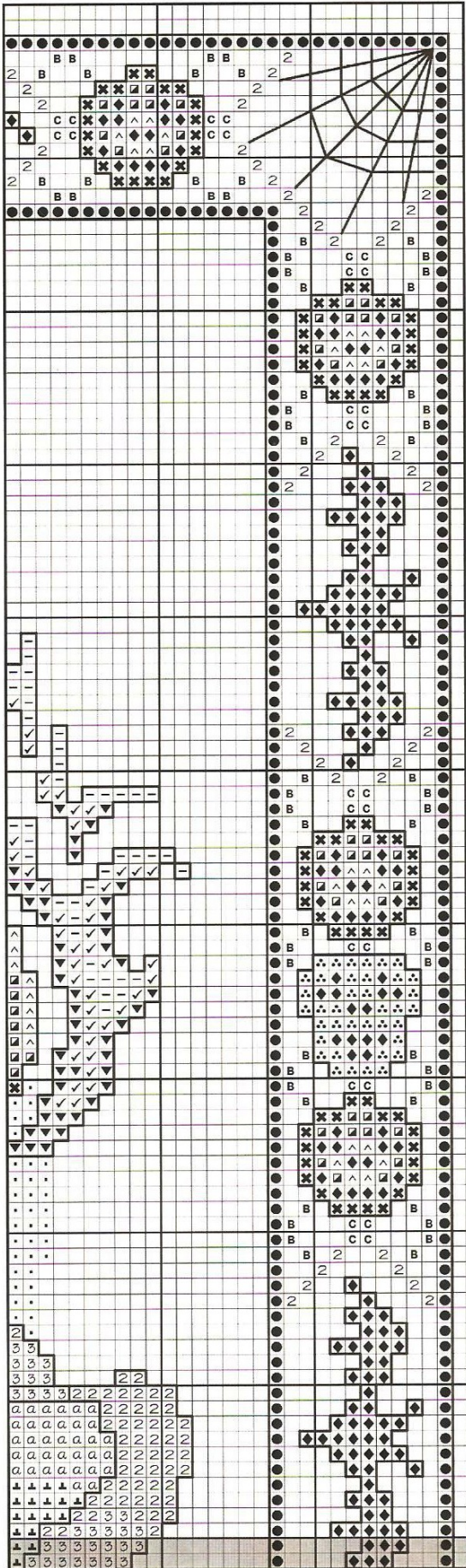




IN A GRAVE LIES THE HORSEMAN,
HIS HEAD IS AT HIS SIDE.
BE BRAVE ENOUGH TO TAKE IT
AND AGAIN BY NIGHT HE WILL RIDE.

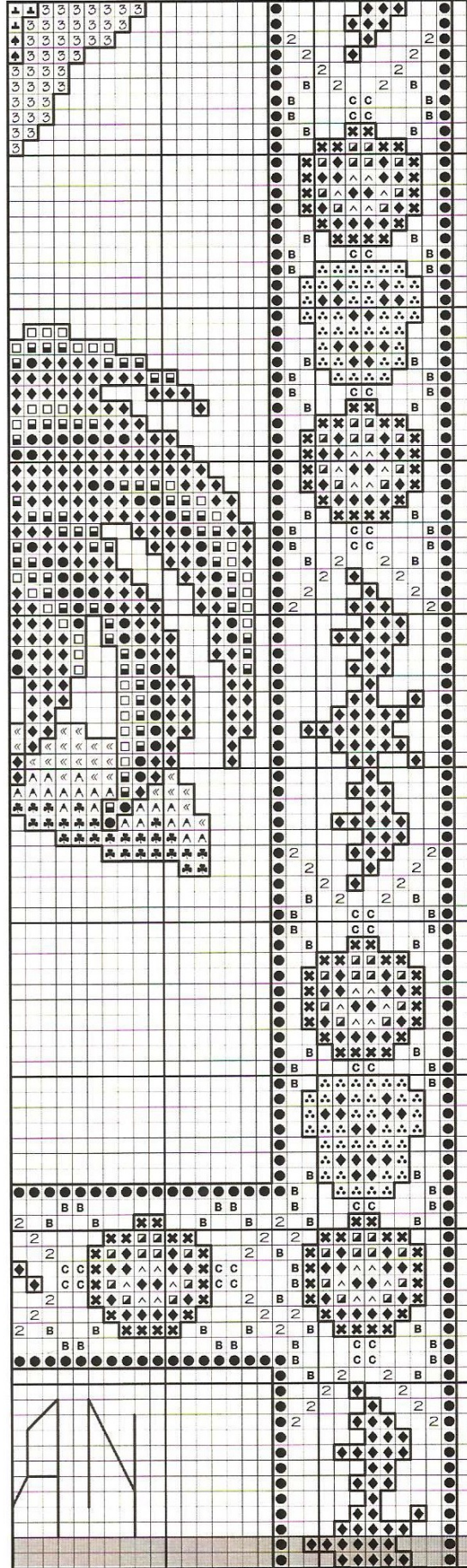


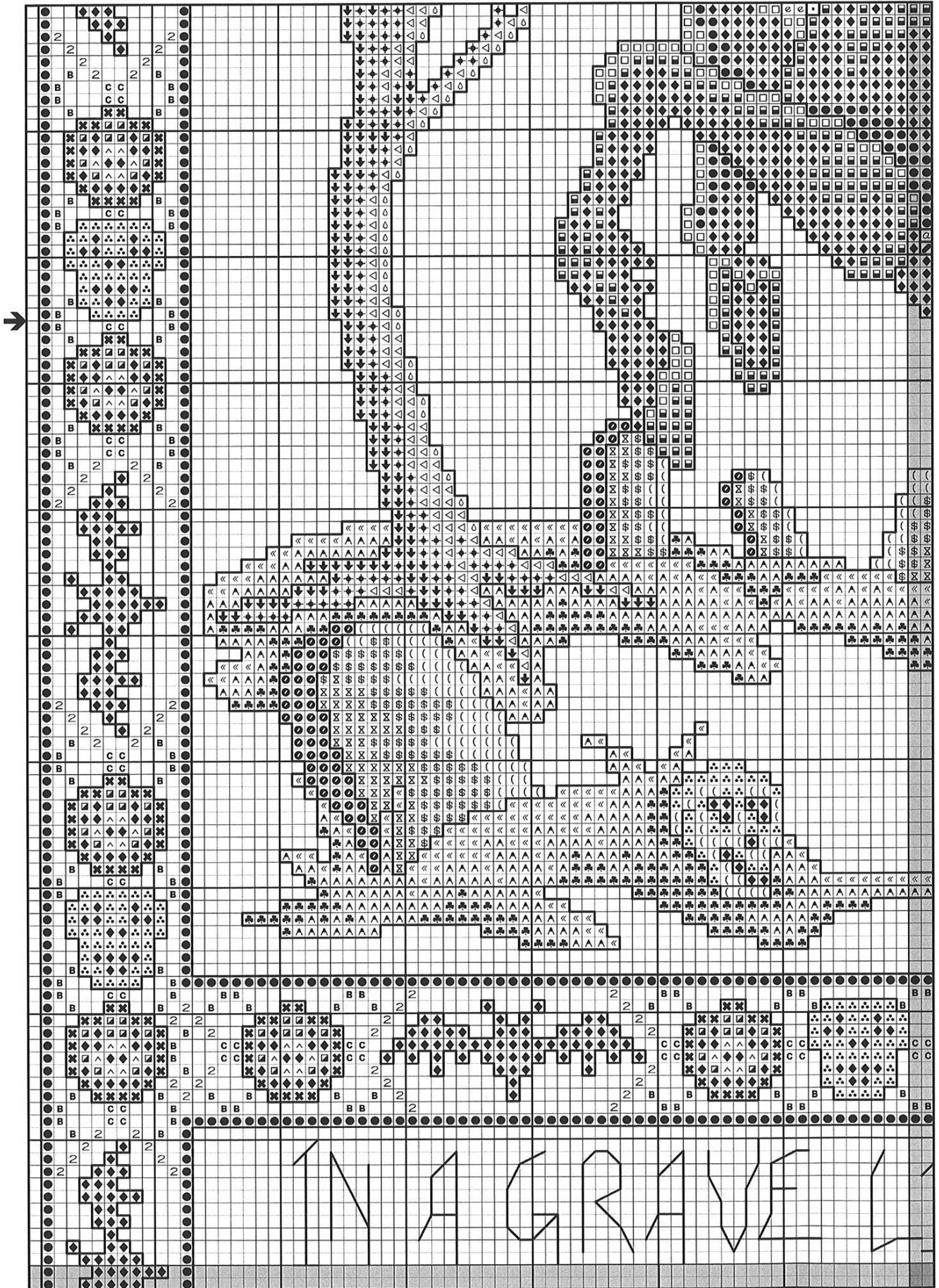
Section 3

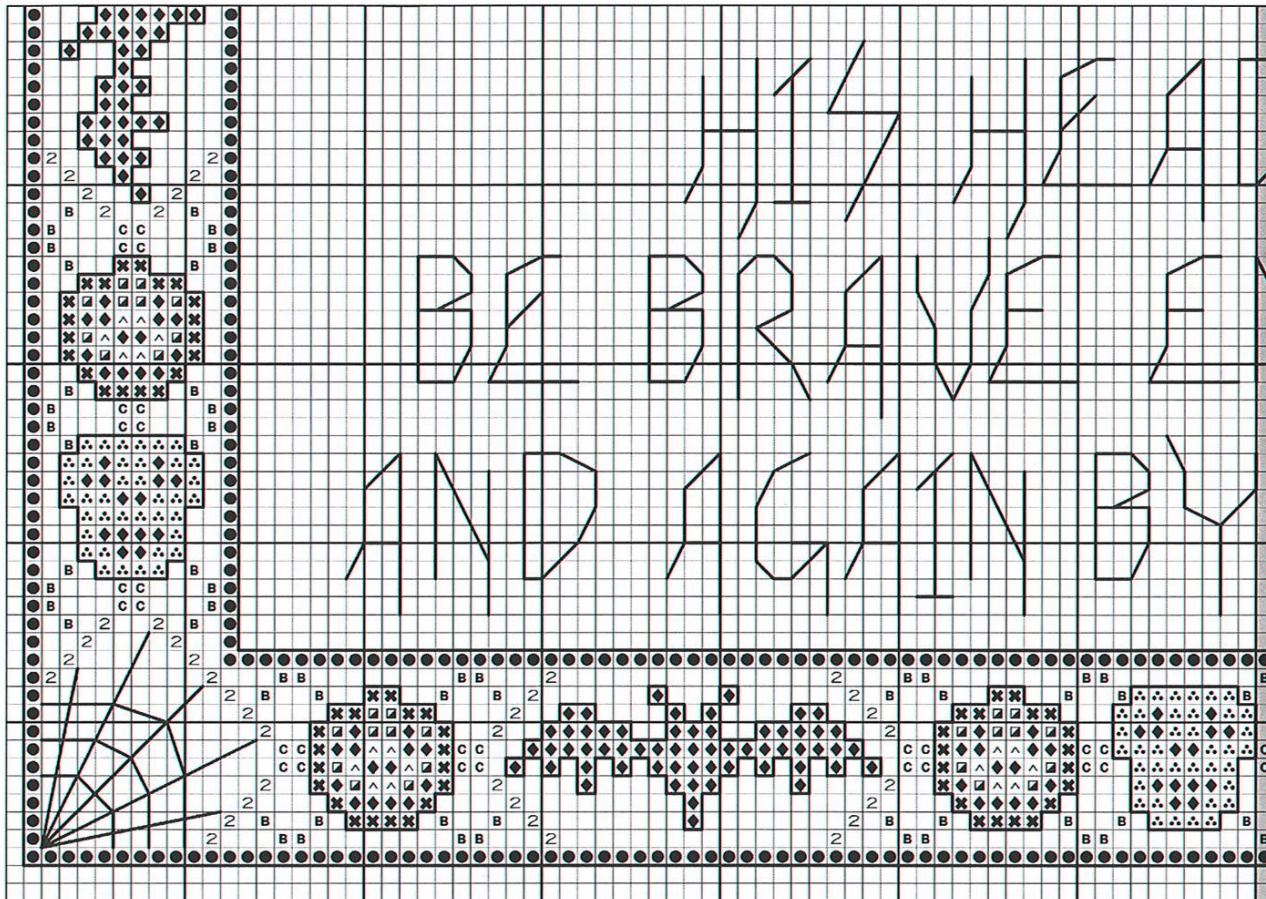


Section 6

NOTE: See Order of Page Sections on inside front cover.



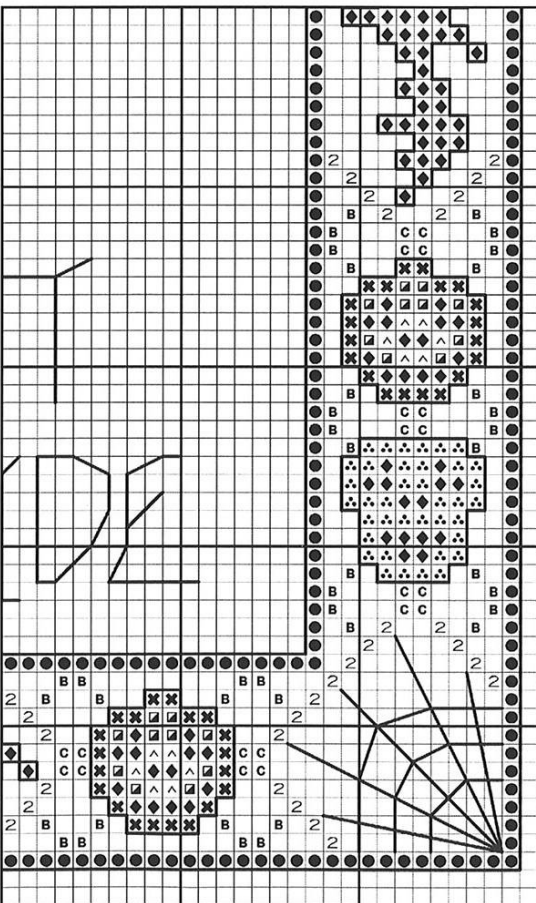
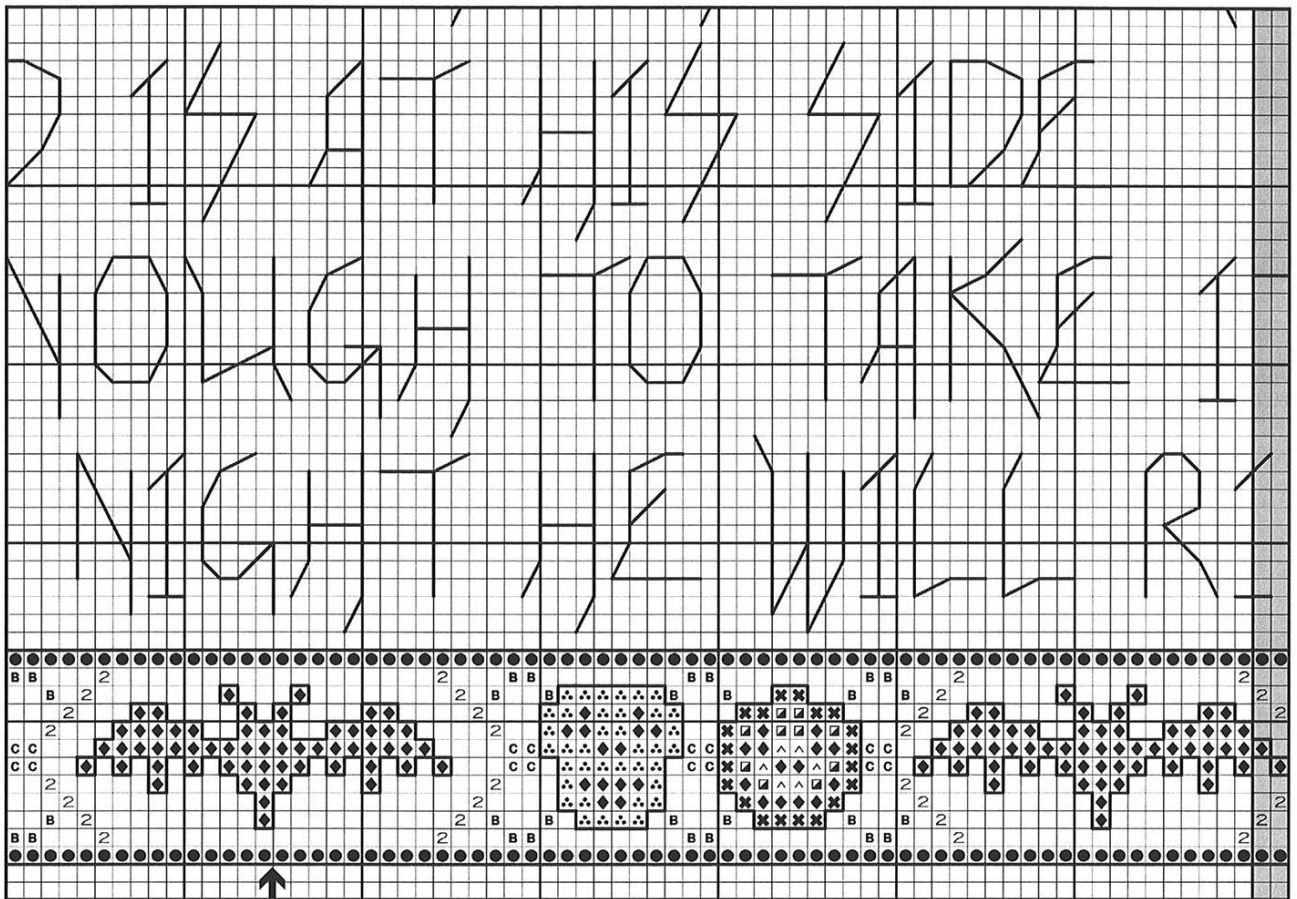




You may make a copy of this design for your own personal use while stitching. However, you may not reproduce, scan, copy, or redistribute this design in hard copy or as a digital file (on the Internet) under any circumstances without the express written permission of Glendon Place. That includes individual elements of the design, Glendon Place images, charts, instructions or logos.

Go to www.GlendonPlace.net and click on Copyright in the far right corner to learn how you can help protect needlework copyright.

Thank you for supporting Glendon Place designs.



Section 9

Sleepy Hollow

Designed by Cheryl A. Granda

General Information: Stitched using 2 threads of floss over 2 threads of fabric. A total of 36 Anchor colors used in model. Also includes 3 colors of Kreinik #4 Very Fine Braid, 2 colors of Mill Hill Beads and 1 color of Caron Waterlilies. DMC comparable and Sullivans USA comparable (best match) colors listed below in color chart.

Fabric: 28ct Haunted Cashel Linen hand-dyed by Picture This Plus.

Stitch Count: Stitched area is 170w X 250h with a stitch count of 168w X 246h.

Design Area: Design area 12"w X 17 1/2"h.

Other Materials Needed

(Also listed in Color Chart)

Kreinik #4 Very Fine Braid

9194 – Star Green
5009 – Mermaid

Kreinik #4 Cord

105C – Antique Silver

Mill Hill Beads

03007 – Silver Moon (2 packs)
03022 – Royal Teal

Waterlilies from the Caron Collection

027 – Lemon-n-Lime

Color Chart for GP-161 Sleepy Hollow

Symbol	Anchor	DMC	Sullivans USA	Color (Anchor Names)
∴	1	B5200	45002	Snow White
*	19	304	45050	Burgundy Med
♥	20	815	45217	Burgundy Med DK
«	214	368	45081	Juniper LT
^	216	320	45061	Juniper Med
♣	218	319	45060	Juniper DK
(231	453	45103	Rose Grey LT
\$	232	452	45102	Rose Grey Med
Σ	233	451	45101	Rose Grey
⊥	273	645	45151	Stone Grey DK
◊	274	928	45272	Blue Mist LT
↑	277	829*	45230*	Desert VY DK
–	302	743	45184	Citrus Med LT

NOTE: SEE INSIDE FRONT COVER FOR STITCHING AND BEADING INSTRUCTIONS, AS WELL AS INFORMATION ABOUT RESOURCES FOR MATERIALS.

Color Chart for GP-161 Sleepy Hollow (Cont'd)

Symbol	Anchor	DMC	Sullivans USA	Color (Anchor Names)
✓	303	742	45183	Citrus Med
▼	304	741	45182	Citrus DK
^	323	722	45169	Apricot LT
▣	324	721	45168	Apricot Med
✕	326	720	45167	Apricot DK
e	398	415	45091	Grey
□	399	318	45090	Grey Med LT
■	400	317	45089	Grey Med
●	401	3799	45397	Grey DK (2 skeins)
◆	403	310	45053	Black (3 skeins)
∇	779	3768	45384	Blue Mist Med DK
◦	830	3033	45150	Sierra VY LT
△	831	3782	45149	Sierra LT
+	832	3032	45148	Sierra Med
#	851	924	45269	Blue Mist DK
◁	903	3790	45396	Tawny Med
✦	904	3781	45393	Tawny
↓	905	3031	45323	Tawny DK
H	906	829*	45230*	Brass DK
:	907	680	45158	Saffron DK
☞	1041	844	45241	Stone Grey VY DK
✕	1050	938	45280	Tawny Med DK
a	8581	646	45152	Stone Grey
⊙	233/401	451/3799	45101/45397	Rose Grey/Grey Dk (1 strand each)
◐	403/851	310/924	45053/45269	Black/Blue Mist DK (1 strand each)
♠	403/1041	310/844	45053/45241	Black/Stone Grey VY DK (1 strand each)
Symbol	Color #	Other	Color Name	
2	9194	Kreinik	Star Green	
3	5009	Kreinik	Mermaid	
1	105C	Kreinik	Antique Silver	
.	027	Caron Waterlilies	Lemon-n-Lime	
B	03007	Mill Hill	Silver Moon	
C	03022	Mill Hill	Royal Teal	

NOTE: An asterisk (*) next to a number in the DMC or Sullivans column indicates that the color has been used twice for two different symbols because it was the "best match" to the Anchor color.

4317 Glendon Place
Valrico FL 33596
Tel. (813) 653-3556
E-mail: email@glendonplace.net
www.glendonplace.net



"Sleepy Hollow"
by Cheryl A. Granda
Copyright © 2009 Glendon Place
All rights reserved

(Reprint 10-19-10)

Sleepy Hollow

Designed by Cheryl A. Granda

“The Legend of Sleepy Hollow” is a short story first published in 1820 by Washington Irving, under the pseudonym Geoffrey Crayon, as part of his collection called The Sketch Book.

The story takes place circa 1790 in the Dutch settlement of Tarrytown, New York and spins the tale of Ichabod Crane, a rather thin, lanky, and overly superstitious schoolmaster from Connecticut.

One autumn night, Ichabod attended a party of a wealthy farmer, Baltus Van Tassel. His primary purpose was to try and woo Van Tassel’s only child, an 18-year old daughter named Katrina. Unfortunately, the town rowdy, Abraham Van Brunt, also had eyes for the young heiress. Later that evening when Ichabod left the party and was returning home, he unexpectedly encountered and was pursued by the Headless Horseman. Some town folks believed this frightening sight was supposedly the ghost of a Hessian trooper who had his head shot off by a stray cannonball in a nameless battle during the Revolutionary War. Others believed it was Van Brunt’s attempt to scare Ichabod away, thus increasing his chances of gaining Katrina’s hand in marriage. Strangely, Ichabod disappeared from town and was never seen again.

I hope you have as much fun stitching Sleepy Hollow as I had creating this spooky adaptation!

Stitching Instructions:

- Design is stitched almost entirely in full stitches, a very small amount of 1/4 stitches (in the horse’s saddle) and a generous amount of backstitching.
- Anchor/DMC/Sullivans USA stitched using 2 strands of floss over 2 threads of fabric.
- Metallic braid stitched using 1 strand of braid over 2 threads of fabric.
- All backstitching done with 1 strand of ANC 403/DMC 310/Sullivans USA 45053, over 2 threads of fabric (except verbiage). Backstitch words in verse with 2 strands of floss over 2 threads of fabric. See below for directions on stitching corner spiderwebs.
- Beading:
 - All beads attached with 1 strand of Anchor 401/DMC 3799/Sullivans USA 45397.
 - Use a half cross-stitch for beads with 1 strand of floss and go through the center of the bead twice before moving to the next bead or securing on the reverse side.
- Moon:
 - Use 2 strands of variegated 027 Caron Waterlilies over 2 threads of fabric. Insure that the 2 strands come from the same 6-ply strand and match each other in variegation in order to achieve the desired result.
 - Complete each full cross-stitch before proceeding to the next stitch.
- Corner spiderwebs:
 - Use 1 strand of ANC 403/DMC 310/Sullivans USA 45053.
 - Complete horizontal stitches of web first (in either 2, 3 or 4 pixel running stitches as indicated

- by the axis points on the graph.
- Complete vertical stitches by beginning at the center point (in the corner) and working one long running stitch to the anchor point of that finger of the web. Come back to the center and repeat until all 5 points have been completed. Anchor thread on the reverse side securely by passing under several threads.

- Order of stitching for best results:
 1. Begin in the center of the fabric and stitch the entire scene in full stitches.
 2. Complete backstitching on all components of the scene: the horse, rider, flaming pumpkin, grave stones, graveyard and tree. NOTE: Moon is not backstitched.
 3. Stitch entire straight-line border in full stitches, then stitch bats, pumpkins and skeletons around the entire border.
 4. Stitch metallic braid areas within border.
 5. Complete all backstitching on entire border.
 6. Finally, attach all beads in border and on jacket of horseman.

Order of Page Sections		
1	2	3
4	5	6
7	8	9

Resources:

- “Haunted” hand-dyed Cashel Linen provided by Picture This Plus. Toll-free (866) 314-4343, www.picturethisplus.com, or order/purchase from your local or online independent needlework shop.
- Metallic braids provided by Kreinik Mfg. Co., Inc., www.kreinik.com. Consumer Line: Toll-free (800) 537-2166. E-mail: kreinik@kreinik.com. Or, purchase from your local or online independent needlework shop.
- Mill Hill Beads provided by Wichelt Imports, Inc. can be purchased at your local or online independent needlework shop.
- Waterlilies from the Caron Collection (203) 381-9999, or purchase from your local needlework shop.
- Floss from Sullivans USA is available in many needlework and craft stores nationwide. Check with your local craft or needlework shop, or e-mail Sullivans USA at sales@sullivansfloss.com or call (800) 862-8586 for help finding a location nearest you.
- Model framing provided by Cindy Dunlow Frames, Six Gun Plaza, 4901 E. Silver Springs Blvd., #701, Ocala, FL 34470, (352) 236-4263, E-mail: cdframes@aol.com.